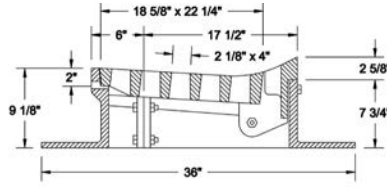


■ Note: When specifying/ordering grates, refer to "Choosing the Proper Inlet Grate" on pages 125-126.  
 For a complete listing of FREE OPEN AREAS and WEIR PERIMETERS of all NEENAH grates, refer to pages 327-332.

### R-3237-A Split Roll Type Inlet Frame, Grate, Curb Box

#### Heavy Duty

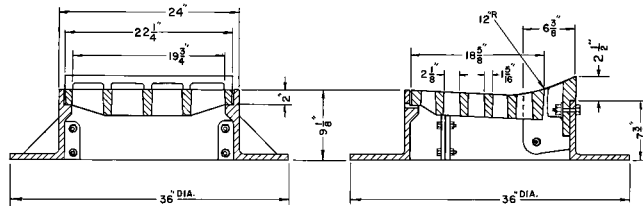
Same as R-3236-A except curb box is designed for roll type curb.



| CATALOG NUMBER | GRATE TYPE | SQ. FT. OPEN | WEIR PERIMETER LINEAL FEET |
|----------------|------------|--------------|----------------------------|
| R-3237-A       | C          | 1.3          | 4.9                        |

### R-3237-B Split Roll Type Inlet Frame, Grate, Curb Box

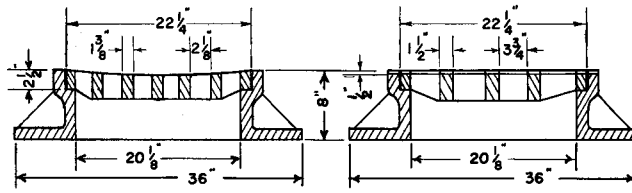
#### Heavy Duty



| CATALOG NUMBER | GRATE TYPE | SQ. FT. OPEN | WEIR PERIMETER LINEAL FEET |
|----------------|------------|--------------|----------------------------|
| R-3237-B       | C          | 1.3          | 4.9                        |

### R-3238 Concave Inlet Frame, Grate

#### Heavy Duty



| CATALOG NUMBER | GRATE TYPE | SQ. FT. OPEN | WEIR PERIMETER LINEAL FEET |
|----------------|------------|--------------|----------------------------|
| R-3238         | C          | 1.3          | 7.4                        |

Supplied By:

**TRENCHDRAIN  
 SUPPLY**

877-903-7246

www.trenchdrainsupply.com

CLICK HERE to return to the Table of Contents

